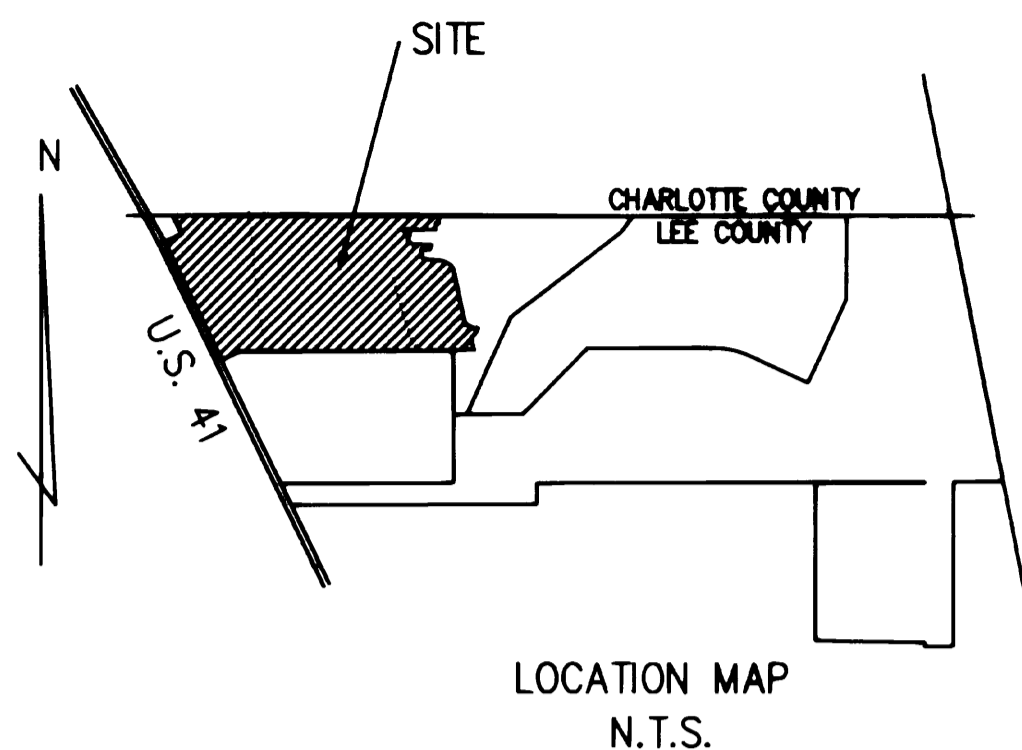


DEL VERA COUNTRY CLUB, UNIT 1

A SUBDIVISION IN SECTIONS 4 & 5, TOWNSHIP 43 SOUTH, RANGE 24 EAST
AND A REPLAT OF A PART OF NORTH FORT MYERS PARK (PB 9, PG 113)
LEE COUNTY, FLORIDA

SHEET 1 OF 19
JOB NUMBER 8958
DATE JUNE, 1990



NOTICE: LAND DESCRIBED IN THIS PLAT ARE SUBDIVIDED BY THE DEVELOPER WITHOUT THE ROADS, DRAINAGE, AND SEWER FACILITIES BEING SPECIFICALLY APPROVED OR ACCEPTED BY LEE COUNTY. ANY PURCHASER OF A LOT IN THIS SUBDIVISION IS ADVISED THAT HE MAY BE SUBJECT TO ASSESSMENT OR CALLED UPON TO BEAR A PORTION OR ALL OF THE EXPENSE OF CONSTRUCTION, MAINTENANCE OR IMPROVEMENT OF ROADS, DRAINAGE AND SEWER FACILITIES WITHIN THE SUBDIVISION.

SURVEYORS NOTES

- N.R. DENOTES NON RADIAL
 - o DENOTES PCP (PERMANENT CONTROL POINT)
 - DENOTES PRM (PERMANENT REFERENCE MONUMENT)
 - D.E. DENOTES DRAINAGE EASEMENT
 - (13) DENOTES SUBDIVISION BLOCK NUMBER
 - R.P.A. DENOTES RESOURCE PROTECTION AREA
 - (1) DENOTES CURVE NUMBERS AND REFERS TO THE INFORMATION CONTAINED IN THE CURVE TABLES.
1. THE BEARINGS SHOWN HEREON ARE BASED ON THE CENTER LINE OF SURVEY OF S.R. 45 (US 41, TAMAMIAMI TRAIL) AS SHOWN ON THE RIGHT-OF-WAY MAPS PREPARED BY THE STATE OF FLORIDA STATE ROAD DEPARTMENT (DEPARTMENT OF TRANSPORTATION).
 2. LINES INTERSECTING CURVES ARE RADIAL UNLESS OTHERWISE NOTED.
 3. NOTICE: THERE MAY BE ADDITIONAL RESTRICTIONS THAT ARE NOT RECORDED ON THIS PLAT THAT MAY BE FOUND IN THE PUBLIC RECORDS OF THIS COUNTY.

CLERKS CERTIFICATE

I HEREBY CERTIFY THAT THIS PLAT OF DEL VERA COUNTRY CLUB UNIT, 1 A SUBDIVISION IN SECTIONS 4 AND 5, TOWNSHIP 43 SOUTH, RANGE 24 EAST, AND A REPLAT OF A PORTION OF NORTH FORT MYERS PARK, PLAT BOOK 9, PAGE 113, HAS BEEN EXAMINED BY ME AND FROM MY EXAMINATION I FIND THAT SAID PLAT COMPLIES WITH THE REQUIREMENTS OF PART 1 OF CHAPTER 177, FLORIDA STATUTES. **2885891**

I FURTHER CERTIFY THAT THIS PLAT WAS FILED FOR RECORD AT 12:05 P.M. THIS 2nd DAY OF August A.D. 1990, AND DULY RECORDED IN PLAT BOOK 46 AT PAGES 7 THROUGH 25 OF THE PUBLIC RECORDS OF LEE COUNTY, FLORIDA.

Charlie Green
CLERK OF THE CIRCUIT COURT IN AND FOR LEE COUNTY, FLORIDA

DEL VERA COUNTRY CLUB UNIT 1

LEGAL DESCRIPTION

A PARCEL OF LAND IN SECTIONS 4 AND 5, TOWNSHIP 43 SOUTH, RANGE 24 EAST, LEE COUNTY, FLORIDA MORE PARTICULARLY DESCRIBED AS FOLLOWS:

BEGIN AT THE NORTHEAST CORNER OF SECTION 5, TOWNSHIP 43 SOUTH, RANGE 24 EAST; THENCE S.89°33'20"W. ALONG THE NORTH LINE OF THE NORTHEAST 1/4 OF SAID SECTION 5 FOR 1871.76 FEET TO AN INTERSECTION WITH THE NORTHEASTERLY LINE OF NORTH FORT MYERS PARK ACCORDING TO THE PLAT THEREOF AS RECORDED IN PLAT BOOK 9 AT PAGE 113 OF THE PUBLIC RECORDS OF LEE COUNTY, FLORIDA; THENCE S.26°03'40"E. ALONG SAID NORTHEASTERLY LINE FOR 318.64 FEET TO AN INTERSECTION WITH THE SOUTHEASTERLY LINE OF LOT 3 OF SAID PLAT OF NORTH FORT MYERS PARK; THENCE S.63°56'20"W. ALONG SAID SOUTHEASTERLY LINE FOR 300.77 FEET TO AN INTERSECTION WITH THE NORTHEASTERLY RIGHT OF WAY LINE OF TAMAMIAMI TRAIL (S.R. 45, U.S. 41), BEING A POINT ON THE ARC OF A CIRCULAR CURVE CONCAVE TO THE SOUTHWEST AT A POINT BEARING N.63°13'24"E. FROM THE RADIUS POINT OF SAID CURVE; THENCE SOUTHEASTERLY ALONG THE ARC OF SAID CURVE HAVING FOR ITS ELEMENTS A RADIUS OF 7739.44 FEET AND A CENTRAL ANGLE OF 0°42'56" FOR 96.66 FEET TO THE POINT OF TANGENCY; THENCE S.26°03'40"E. ALONG SAID NORTHEASTERLY RIGHT OF WAY LINE FOR 1943.40 FEET TO AN INTERSECTION WITH A LINE PARALLEL WITH AND 40.00 FEET NORTHWESTERLY OF AS MEASURED AT RIGHT ANGLES TO THE SOUTHEASTERLY LINE OF LOT 24 OF THE FOREMENTIONED PLAT OF NORTH FORT MYERS PARK; THENCE N.63°56'20"E. ALONG SAID PARALLEL LINE FOR 300.17 FEET TO AN INTERSECTION WITH THE FOREMENTIONED NORTHEASTERLY LINE OF NORTH FORT MYERS PARK; THENCE N.26°03'40"W. ALONG SAID NORTHEASTERLY LINE FOR 4.46 FEET; THENCE N.89°48'47"E. FOR 3675.88 FEET; THENCE N.12°18'40"W. FOR 170.01 FEET TO AN INTERSECTION WITH THE ARC OF A CIRCULAR CURVE CONCAVE TO THE NORTHWEST AT A POINT BEARING S.31°57'43"E. FROM THE RADIUS POINT OF SAID CURVE; THENCE NORTHEASTERLY ALONG THE ARC OF SAID CURVE HAVING FOR ITS ELEMENTS A RADIUS OF 275.00 FEET AND A CENTRAL ANGLE OF 33°08'41" FOR 159.08 FEET TO THE POINT OF TANGENCY; THENCE N.24°53'37"E. FOR 32.88 FEET; THENCE N.65°08'23"W. FOR 35.00 FEET; THENCE S.24°53'37"W. FOR 32.88 FEET; THENCE N.65°08'23"W. FOR 181.88 FEET; THENCE N.12°15'14"W. FOR 846.41 FEET TO THE POINT OF CURVATURE OF A CIRCULAR CURVE CONCAVE TO THE SOUTHWEST; THENCE NORTHWESTERLY ALONG THE ARC OF SAID CURVE HAVING FOR ITS ELEMENTS A RADIUS OF 150.00 FEET AND A CENTRAL ANGLE OF 50°00'11" FOR 130.91 FEET TO THE POINT OF TANGENCY; THENCE N.62°15'26"W. FOR 76.90 FEET TO THE POINT OF CURVATURE OF A CIRCULAR CURVE CONCAVE TO THE SOUTHWEST; THENCE NORTHWESTERLY AND WESTERLY ALONG THE ARC OF SAID CURVE HAVING FOR ITS ELEMENTS A RADIUS OF 150.00 FEET AND A CENTRAL ANGLE OF 23°42'10" FOR 62.05 FEET TO THE POINT OF TANGENCY; THENCE N.85°57'36"W. FOR 242.17 FEET TO THE POINT OF CURVATURE OF A CIRCULAR CURVE CONCAVE TO THE NORTHEAST; THENCE NORTHWESTERLY AND NORTHERLY ALONG THE ARC OF SAID CURVE HAVING FOR ITS ELEMENTS A RADIUS OF 50.00 FEET AND A CENTRAL ANGLE OF 79°48'27" FOR 69.65 FEET TO THE POINT OF TANGENCY; THENCE N.06°09'09"W. FOR 106.48 FEET TO A RADIAL INTERSECTION WITH THE ARC OF A CIRCULAR CURVE CONCAVE TO THE SOUTH; THENCE EASTERLY ALONG THE ARC OF SAID CURVE HAVING FOR ITS ELEMENTS A RADIUS OF 460.00 FEET AND A CENTRAL ANGLE OF 17°46'06" FOR 142.65 FEET; THENCE N.11°36'57"E. FOR 80.00 FEET TO A RADIAL INTERSECTION WITH THE ARC OF A CIRCULAR CURVE CONCAVE TO THE SOUTH; THENCE WESTERLY AND SOUTHWESTERLY ALONG THE ARC OF SAID CURVE HAVING FOR ITS ELEMENTS A RADIUS OF 540.00 FEET AND A CENTRAL ANGLE OF 28°25'40" FOR 267.92 FEET; THENCE N.56°08'24"W. FOR 118.28 FEET TO AN INTERSECTION WITH THE ARC OF A CIRCULAR CURVE CONCAVE TO THE NORTHWEST AT A POINT BEARING S.67°19'50"E. FROM THE RADIUS POINT OF SAID CURVE; THENCE NORTHEASTERLY AND NORTHERLY ALONG THE ARC OF SAID CURVE HAVING FOR ITS ELEMENTS A RADIUS OF 393.00 FEET AND A CENTRAL ANGLE OF 22°22'51" FOR 153.51 FEET; THENCE N.89°42'40"W. FOR 100.00 FEET; THENCE N.00°17'20"E. FOR 25.00 FEET; THENCE S.89°42'40"E. FOR 500.00 FEET; THENCE N.00°17'20"E. FOR 100.00 FEET; THENCE S.89°42'40"E. FOR 46.38 FEET; THENCE N.00°17'20"E. FOR 185.00 FEET TO AN INTERSECTION WITH THE NORTH LINE OF SECTION 4, TOWNSHIP 43 SOUTH, RANGE 24 EAST; THENCE N.89°42'40"W. ALONG SAID NORTH LINE FOR 2299.67 FEET TO THE POINT OF BEGINNING.

DEDICATION

KNOW ALL MEN BY THESE PRESENTS THAT DEL VERA LIMITED PARTNERSHIP, A FLORIDA LIMITED PARTNERSHIP, THE OWNER OF THE HEREON DESCRIBED LANDS, HAS CAUSED THIS PLAT OF DEL VERA COUNTRY CLUB UNIT, 1 A SUBDIVISION IN SECTIONS 4 AND 5, TOWNSHIP 43 SOUTH, RANGE 24 EAST, AND A REPLAT OF A PORTION OF NORTH FORT MYERS PARK, PLAT BOOK 9, PAGE 113, TO BE MADE HEREBY VACATING, REVOKING AND ABROGATING ANY PLAT OR PLATS OF ANY PART OF SAID LANDS HERETOFORE MADE AND DOES HEREBY DEDICATE TO THE PERPETUAL USE OF THE DEL VERA COUNTRY CLUB HOMEOWNERS ASSOCIATION, FOR PROPER PURPOSES, ALL ROADS, DRAINAGE EASEMENTS, LANDSCAPE EASEMENTS, GOLF COURSE CART PATH EASEMENTS, AND LAKE MAINTENANCE EASEMENTS. THE UTILITY EASEMENTS SHOWN OR DESCRIBED HEREON ARE HEREBY DEDICATED TO THE PUBLIC.

IN WITNESS WHEREOF DEL VERA LIMITED PARTNERSHIP HAS CAUSED THESE PRESENTS TO BE MADE AND ITS CORPORATE SEAL TO BE AFFIXED THIS 29th DAY OF JUNE A.D. 1990

DEL VERA LIMITED PARTNERSHIP,
A FLORIDA LIMITED PARTNERSHIP
BY: DEL TURA DEVELOPMENT COMPANY,
A DELAWARE CORPORATION, GENERAL PARTNER

Paul C. Kanovas

PAUL C. KANOVAS
VICE PRESIDENT

ACKNOWLEDGEMENT

STATE OF FLORIDA

COUNTY OF LEE

I HEREBY CERTIFY THAT ON THIS DAY PERSONALLY APPEARED BEFORE ME PAUL C. KANOVAS, AS VICE PRESIDENT OF DEL TURA DEVELOPMENT COMPANY, THE GENERAL PARTNER OF DEL VERA LIMITED PARTNERSHIP, TO ME KNOWN AND HE ACKNOWLEDGED THE EXECUTION OF THE FOREGOING DEDICATION TO BE HIS FREE ACT AND DEED AS SUCH OFFICER FOR THE USES AND PURPOSES THEREIN MENTIONED AND THAT THE SAID DEDICATION IS THE ACT AND DEED OF SAID CORPORATION AND LIMITED PARTNERSHIP.

WITNESS MY HAND AND NOTARIAL SEAL AT SAID COUNTY AND COUNTY OF LEE, FLORIDA, THIS 29th DAY OF JUNE A.D. 1990.

James R. Coleman
NOTARY PUBLIC STATE OF FLORIDA AT LARGE

APPROVALS

THIS PLAT OF DEL VERA COUNTRY CLUB UNIT, 1 A SUBDIVISION IN SECTIONS 4 AND 5, TOWNSHIP 43 SOUTH, RANGE 24 EAST, AND A REPLAT OF A PORTION OF NORTH FORT MYERS PARK, PLAT BOOK 9, PAGE 113, WAS ACCEPTED THIS DAY OF A.D. 1990, IN AN OPEN MEETING OF THE BOARD OF COUNTY COMMISSIONERS OF LEE COUNTY, FLORIDA.

Paul J. Bangs
COUNTY ENGINEER

Charlie Green
CLERK OF THE COURT

James R. Coleman
COUNTY ATTORNEY

Raymond
VICE-CHAIRMAN OF THE BOARD

DIRECTOR, DEPARTMENT OF COMMUNITY DEVELOPMENT

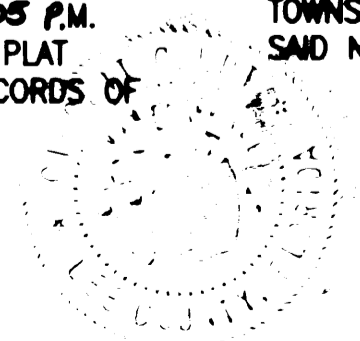
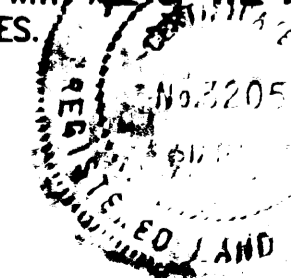
William D. Spinks

SURVEYORS CERTIFICATE

I HEREBY CERTIFY THAT THE ATTACHED PLAT OF DEL VERA COUNTRY CLUB UNIT, 1 A SUBDIVISION IN SECTIONS 4 AND 5, TOWNSHIP 43 SOUTH, RANGE 24 EAST, AND A REPLAT OF A PORTION OF NORTH FORT MYERS PARK, PLAT BOOK 9, PAGE 113, IS A TRUE AND CORRECT REPRESENTATION OF THE HEREON DESCRIBED LAND ACCORDING TO A RECENT SURVEY MADE AND PLATTED UNDER MY DIRECTION AND SUPERVISION, THAT THE PERMANENT REFERENCE MONUMENTS HAVE BEEN SET, AND THAT THE SURVEY DATA COMPLIES WITH ALL OF THE REQUIREMENTS OF CHAPTER 177, FLORIDA STATUTES.

FOR: BROWN COLLINS, INC.

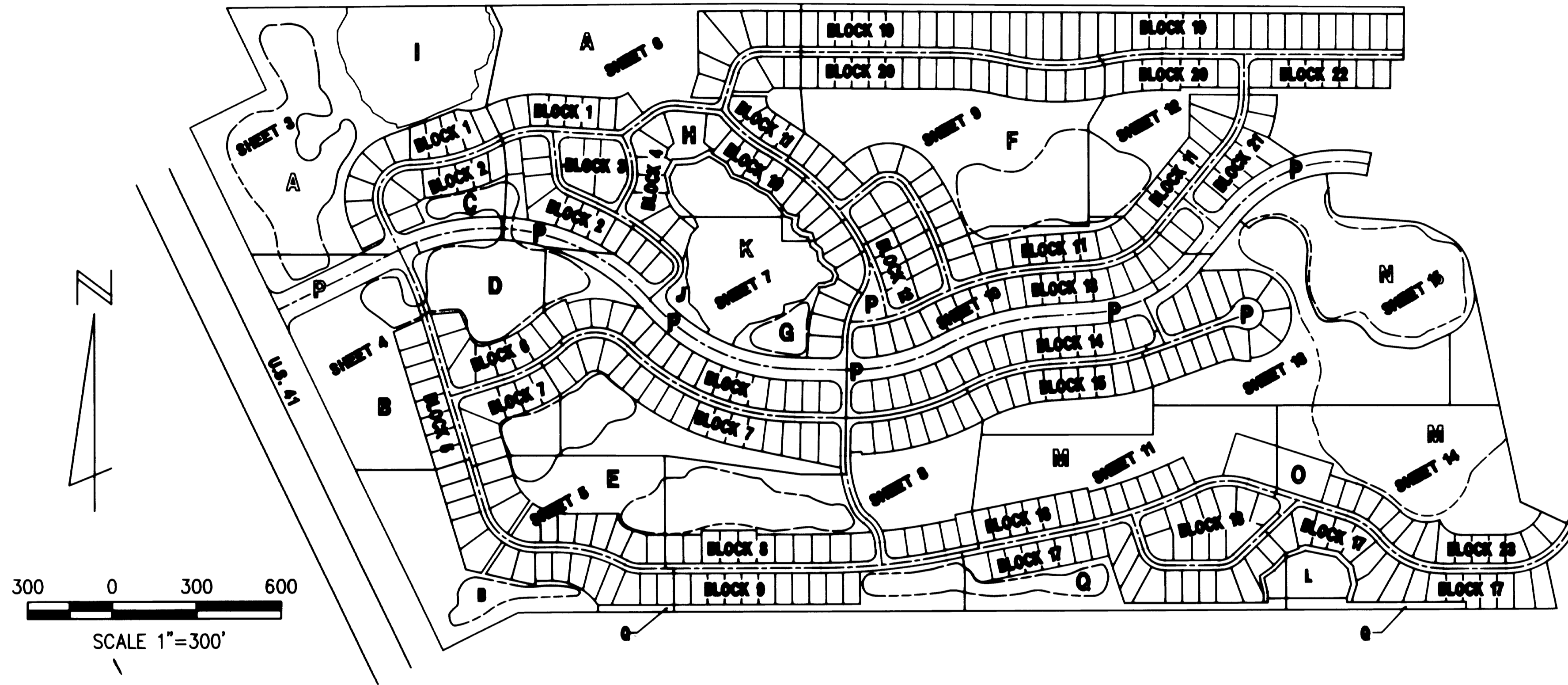
James R. Coleman
JAMES R. COLEMAN
PROFESSIONAL LAND SURVEYOR
FLORIDA CERTIFICATE NO. 3205



5-18-89

DEL VERA COUNTRY CLUB, UNIT 1

A SUBDIVISION IN SECTIONS 4 & 5, TOWNSHIP 43 SOUTH, RANGE 24 EAST
AND A REPLAT OF A PART OF NORTH FORT MYERS PARK (PB 9, PG 113)
LEE COUNTY, FLORIDA



INDEX MAP

TRACT IDENTIFICATION

- TRACTS A, B, E, F AND M - GOLF COURSE PARCELS
- TRACTS C, D, G AND Q - LAKE AREAS FOR DRAINAGE, IRRIGATION
- TRACT H - RECREATION AREA.
- TRACT P - PRIVATE ROADS FOR INGRESS AND EGRESS PURPOSES,
AND UTILITY ACCESS EASEMENTS.
- TRACT N - CLUBHOUSE AREA.
- TRACT O - PRO SHOP AREA.
- TRACT J - FUTURE DEVELOPMENT.
- TRACTS I, K, AND L - RESOURCE PROTECTION AREAS.
- TRACT Q - LANDSCAPE BUFFER.

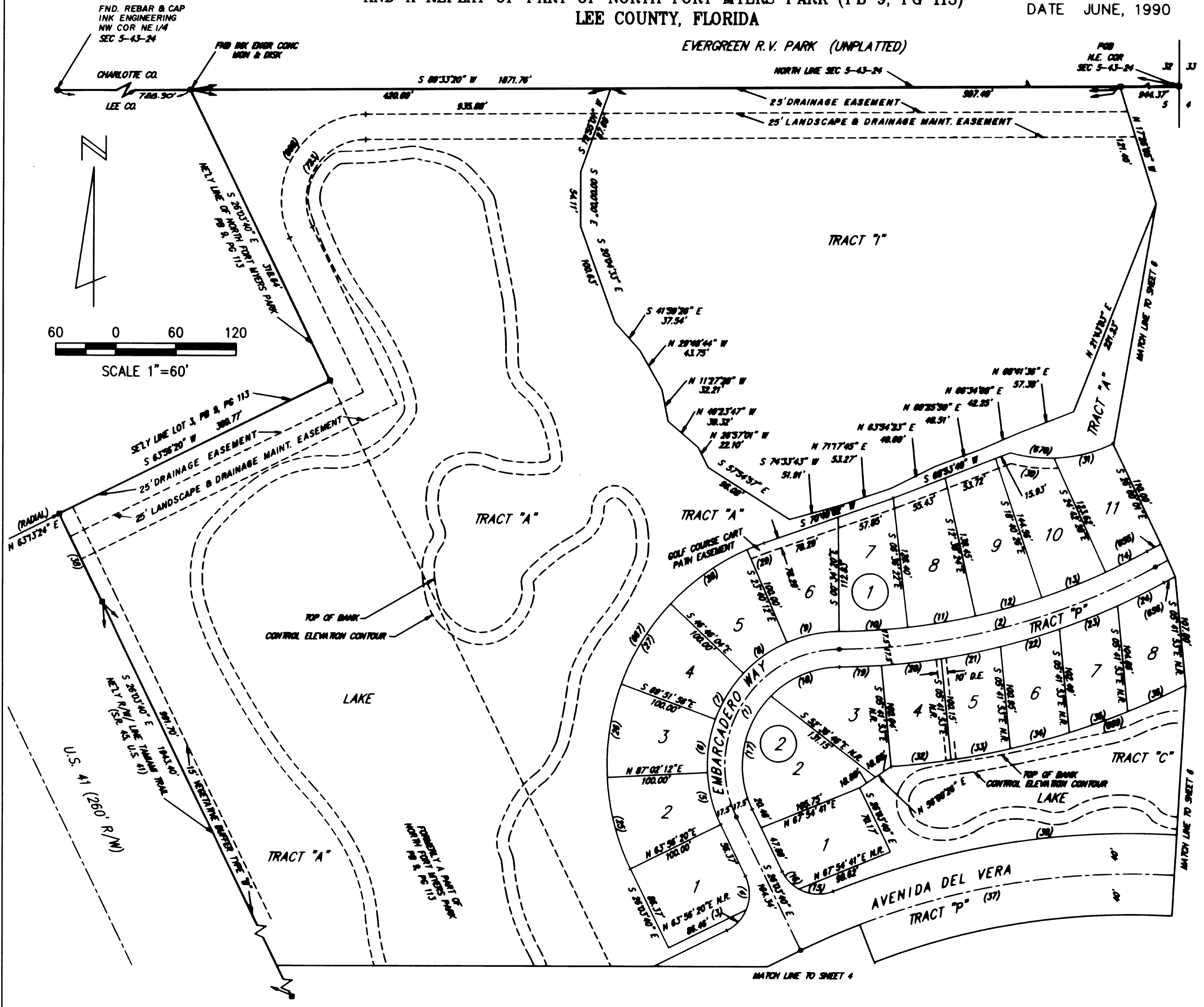
EASEMENTS:

IN ADDITION TO THE EASEMENTS SPECIFICALLY SHOWN HEREON, THE FOLLOWING EASEMENTS ARE HEREBY CREATED:

1. A PUBLIC UTILITY EASEMENT 10.00 FEET WIDE ALONG THE FRONT OF EACH LOT AND TRACT.
2. A PUBLIC UTILITY EASEMENT 5.00 FEET WIDE ADJACENT TO ALL SIDE LOT LINES.
3. A PUBLIC UTILITY EASEMENT 6.00 FEET WIDE ADJACENT TO ALL REAR LOT LINES.
4. A LAKE MAINTENANCE EASEMENT 20.00 FEET WIDE AROUND THE PERIMETER OF EACH LAKE, MEASURED FROM THE CONTROL ELEVATION CONTOUR.
5. A GOLF COURSE INGRESS, EGRESS AND MAINTENANCE EASEMENT 5.00 FEET WIDE ALONG THE REAR OF EACH LOT ABUTTING TRACTS A, B, E, F OR M.

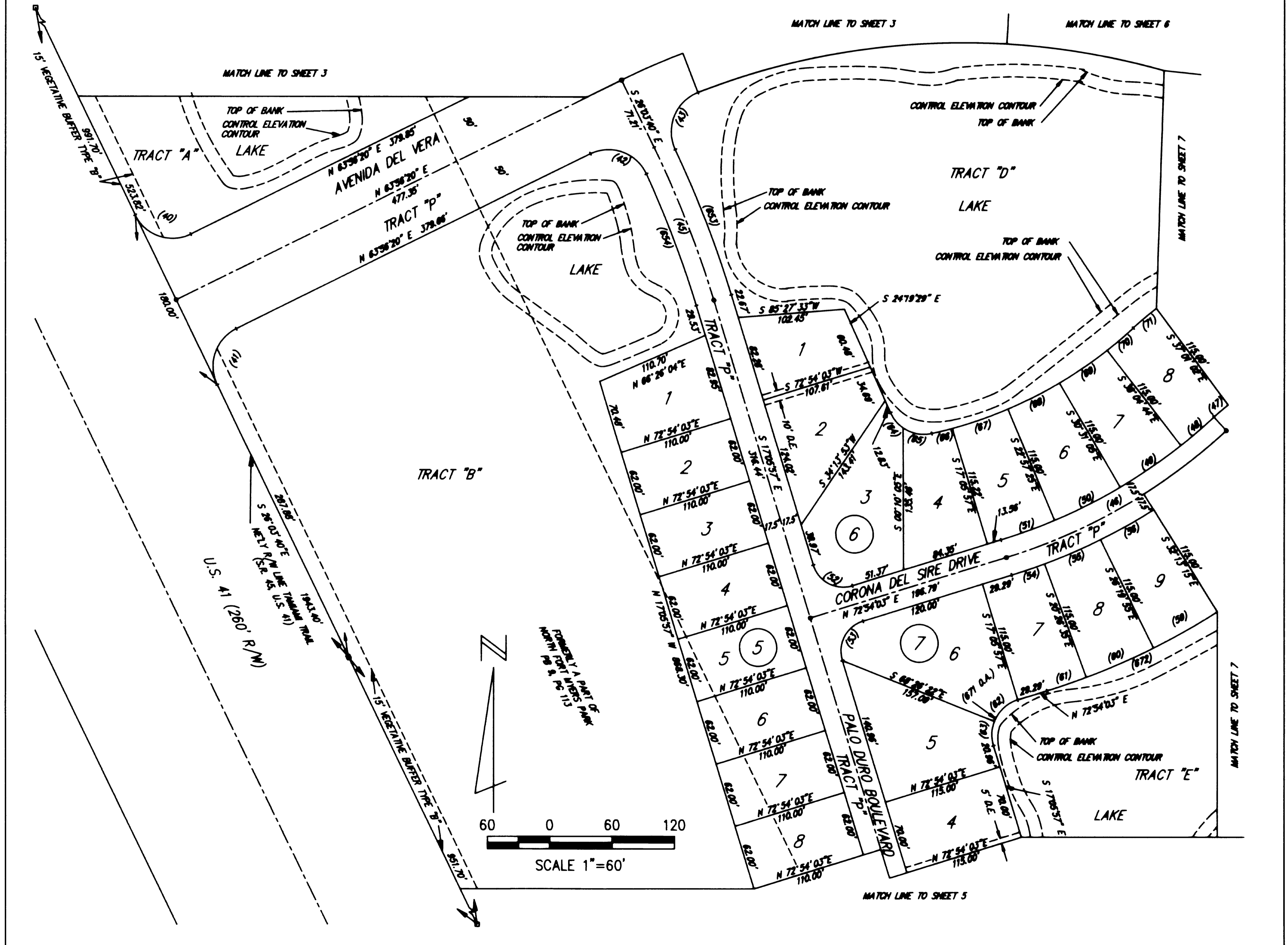
DEL VERA COUNTRY CLUB, UNIT 1

A SUBDIVISION IN SECTIONS 4 & 5, TOWNSHIP 43 SOUTH, RANGE 24 EAST
AND A REPLAT OF PART OF NORTH FORT MYERS PARK (PB 9, PG 113)
LEE COUNTY, FLORIDA



DEL VERA COUNTRY CLUB, UNIT 1

A SUBDIVISION IN SECTIONS 4 & 5, TOWNSHIP 43 SOUTH, RANGE 24 EAST
AND A REPLAT OF PART OF NORTH FORT MYERS PARK (PB 9, PG 113)
LEE COUNTY, FLORIDA



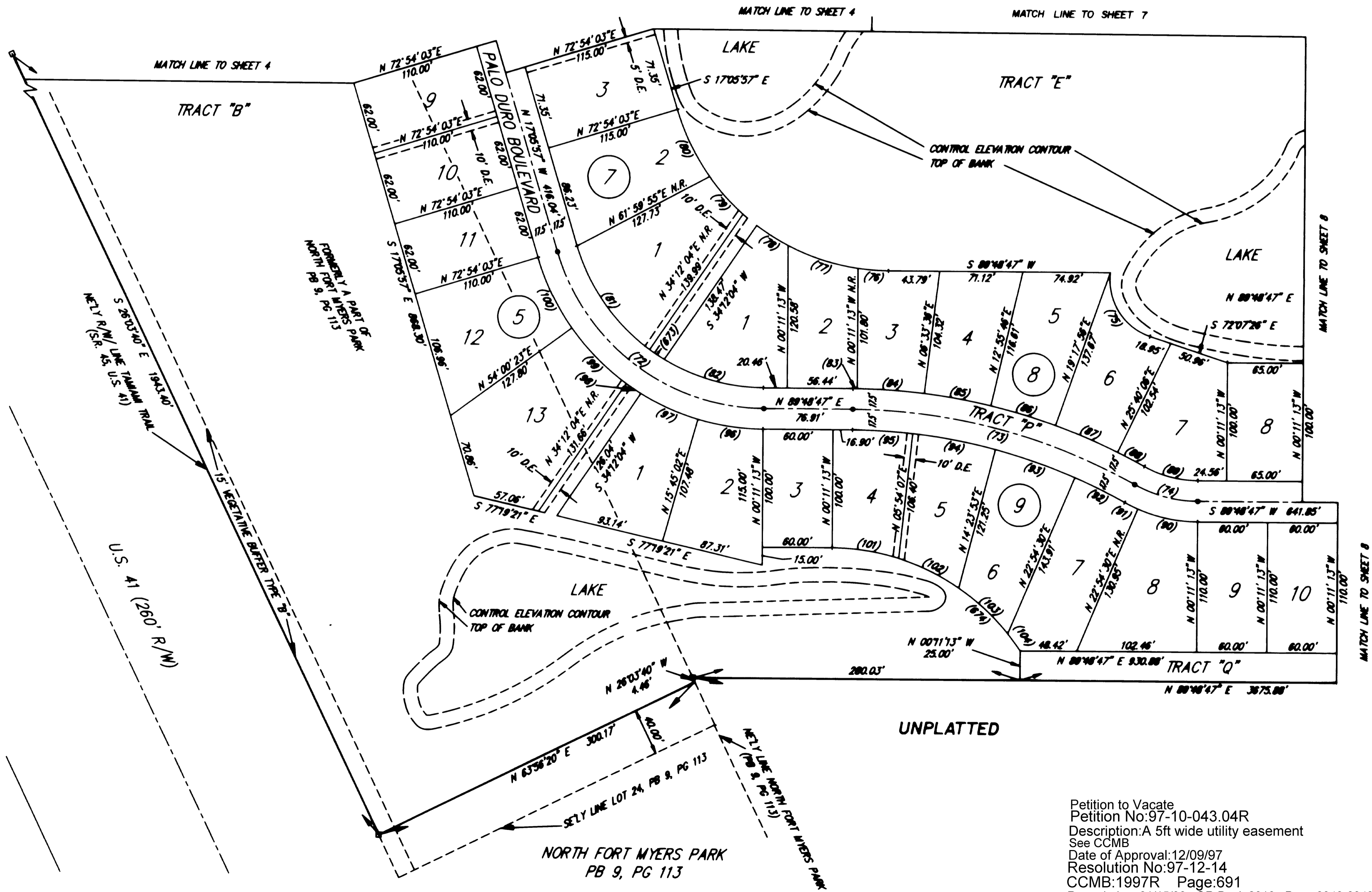
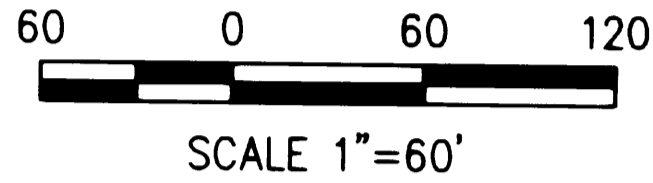
BROWN COLLINS, INC.
2125 FIRST STREET, SUITE 201
FORT MYERS, FLORIDA 33901

DEL VERA COUNTRY CLUB, UNIT 1

A SUBDIVISION IN SECTIONS 4 & 5, TOWNSHIP 43 SOUTH, RANGE 24 EAST
AND A REPLAT OF PART OF NORTH FORT MYERS PARK (PB 9, PG 113)
LEE COUNTY, FLORIDA

PLAT BOOK 46 PAGE 11

SHEET 5 OF 19
JOB NUMBER 8958
DATE JUNE, 1990



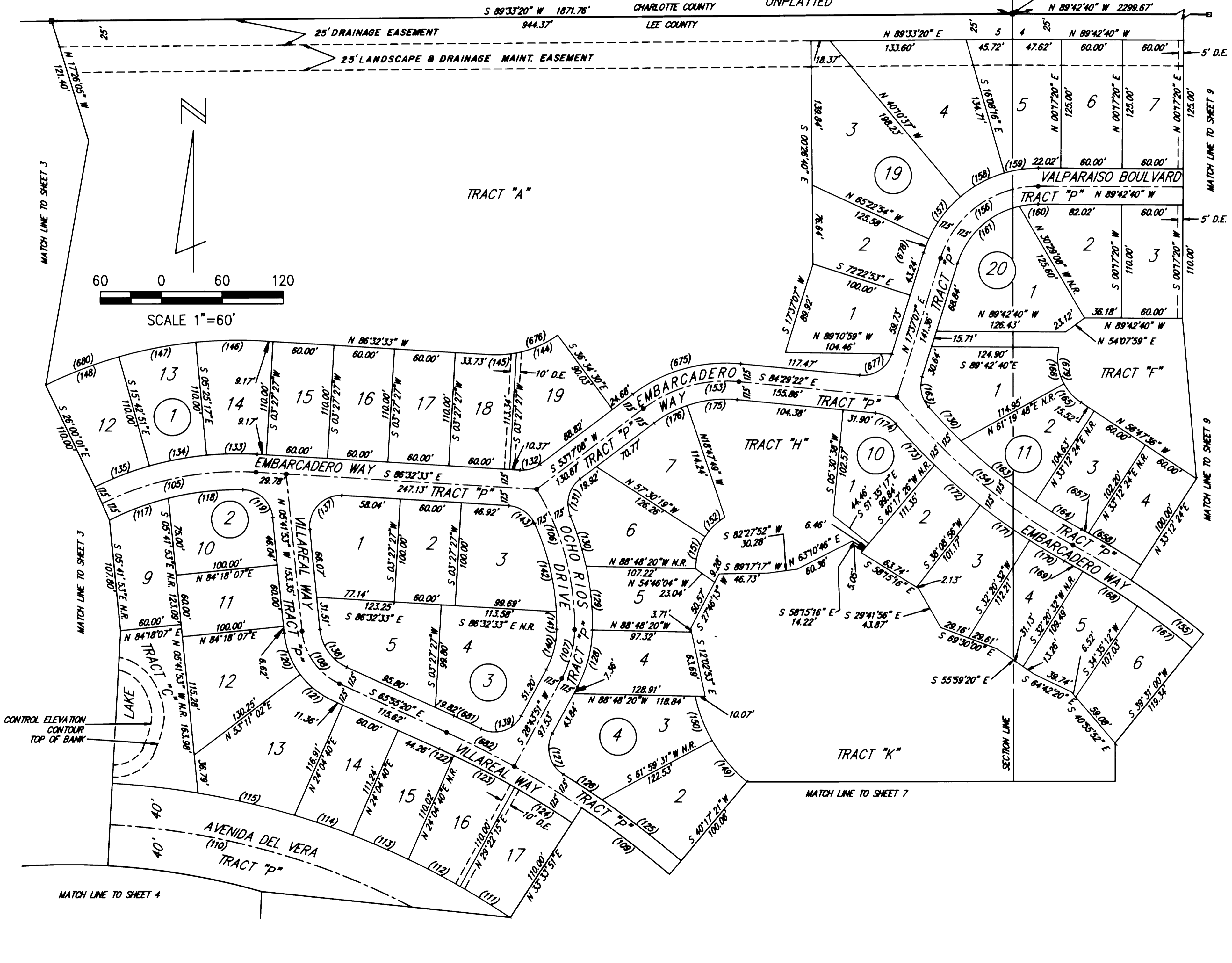
Petition to Vacate
Petition No: 97-10-043.04R
Description: A 5ft wide utility easement
See CCMB
Date of Approval: 12/09/97
Resolution No: 97-12-14
CCMB: 1997R Page: 691
Recorded on: 01/15/98 OR Book: 2910 Page: 0940-0943

DEL VERA COUNTRY CLUB, UNIT 1

A SUBDIVISION IN SECTIONS 4 & 5, TOWNSHIP 43 SOUTH, RANGE 24 EAST
 AND A REPLAT OF PART OF NORTH FORT MYERS PARK (PB 9, PG 113)
 LEE COUNTY, FLORIDA

EVERGREEN R.V. PARK
 UNPLATTED

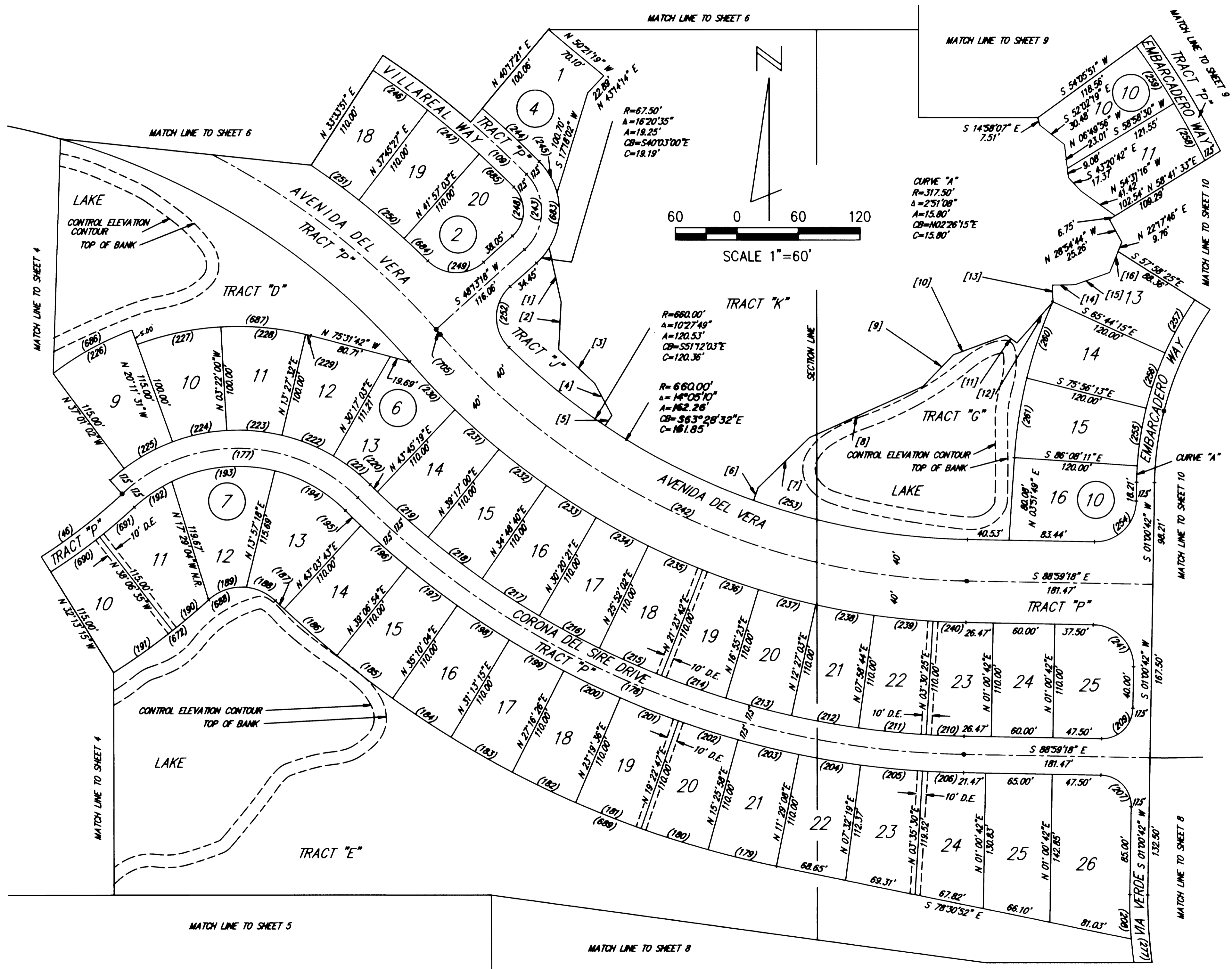
P.O.B. FND. CONC. MON.
 N.E. COR
 SEC 5-43-24



DEL VERA COUNTRY CLUB, UNIT 1

A SUBDIVISION IN SECTIONS 4 & 5, TOWNSHIP 43 SOUTH, RANGE 24 EAST
AND A REPLAT OF PART OF NORTH FORT MYERS PARK (PB 9, PG 113)
LEE COUNTY, FLORIDA

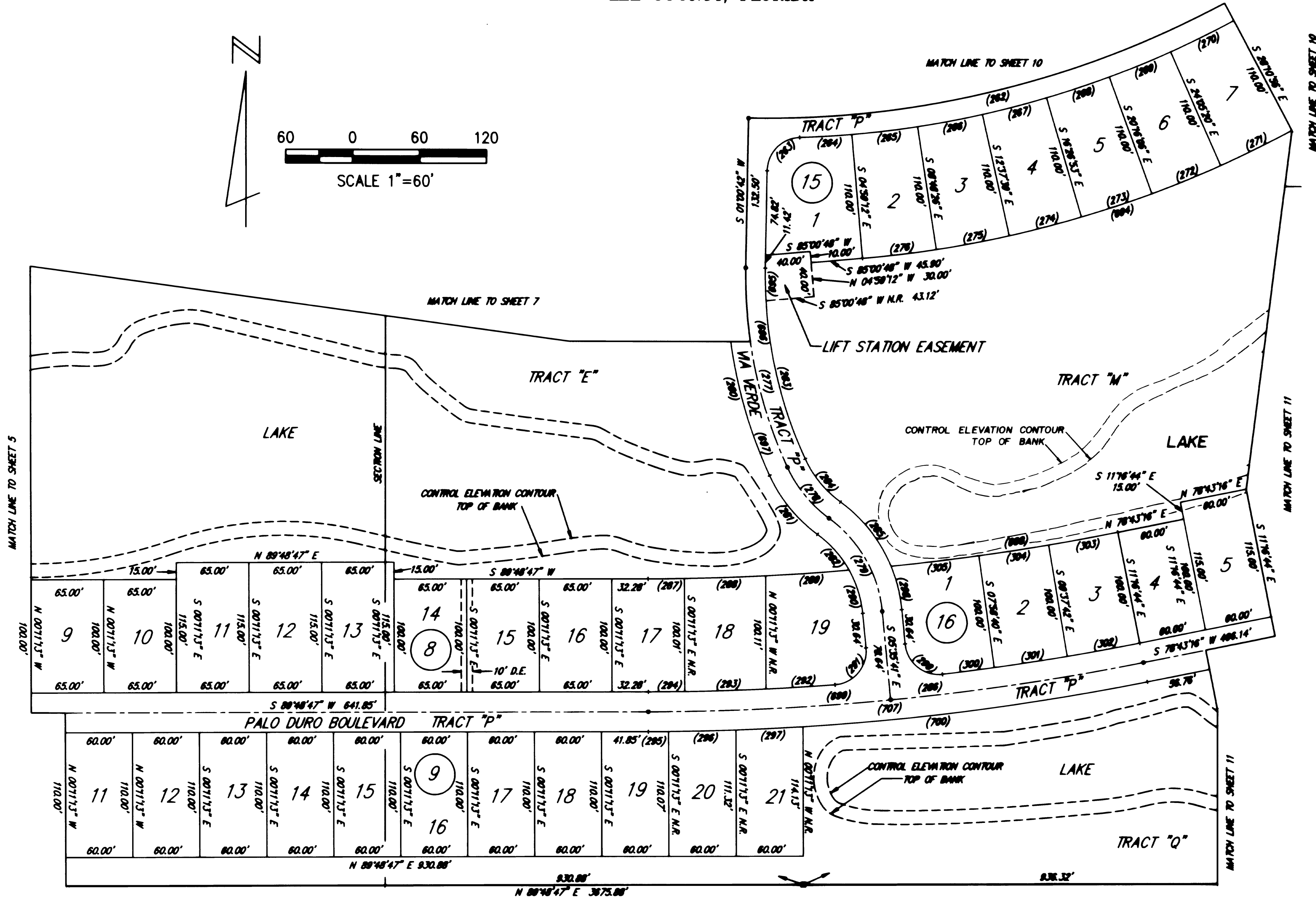
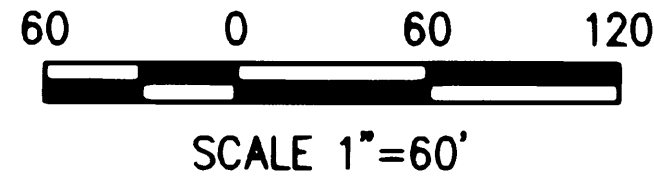
SHEET 7 OF 19
JOB NUMBER 8958
DATE JUNE, 1990



DEL VERA COUNTRY CLUB, UNIT 1

A SUBDIVISION IN SECTIONS 4 & 5, TOWNSHIP 43 SOUTH, RANGE 24 EAST
AND A REPLAT OF PART OF NORTH FORT MYERS PARK (PB 9, PG 113)
LEE COUNTY, FLORIDA

SHEET 8 OF 19
JOB NUMBER 8958
DATE JUNE, 1990



UNPLATTED

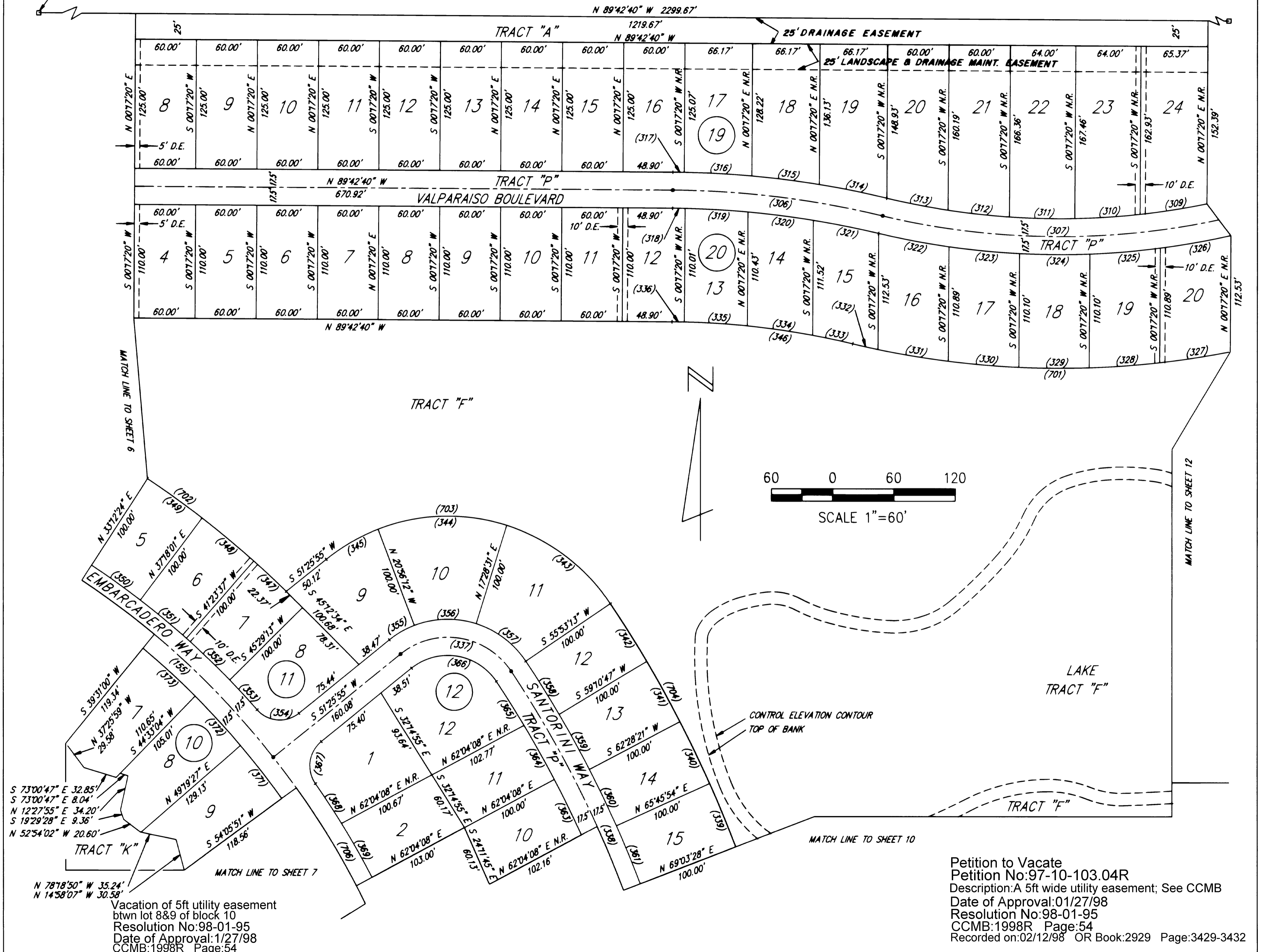
DEL VERA COUNTRY CLUB, UNIT 1

A SUBDIVISION IN SECTIONS 4 & 5, TOWNSHIP 43 SOUTH, RANGE 24 EAST
AND A REPLAT OF PART OF NORTH FORT MYERS PARK (PB 9, PG 113)
LEE COUNTY, FLORIDA

SHEET 9 OF 19
JOB NUMBER 8958
DATE JUNE, 1990

P.O.B.
FND CONC MON
NE COR
SEC 5-43-24

UNPLATTED



S 73°00'47" E 32.85'
S 73°00'47" E 8.04'
N 122°7'55" E 34.20'
S 192°29'28" E 9.36'
N 52°54'02" W 20.60'

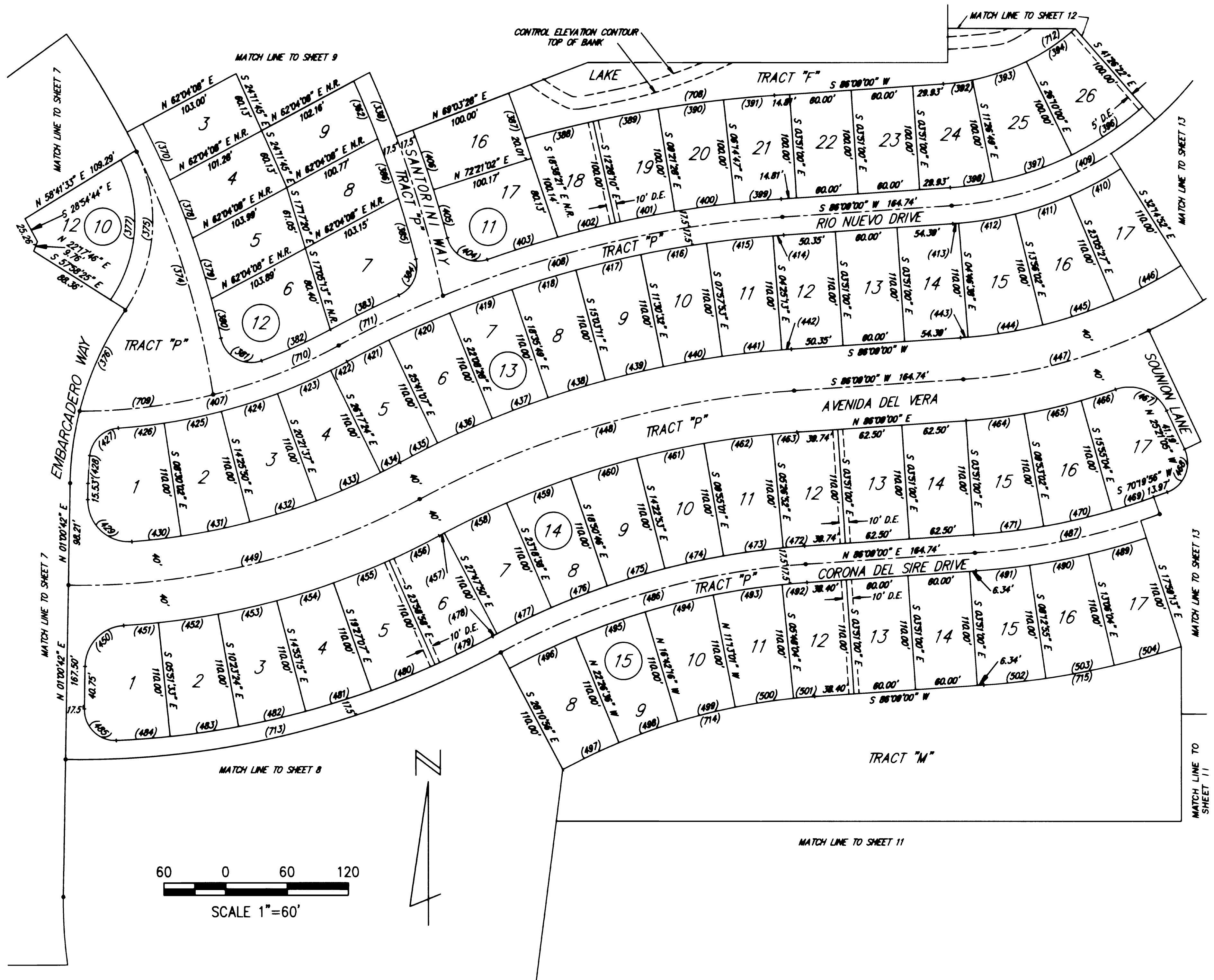
Vacation of 5ft utility easement
btwn lot 8&9 of block 10
Resolution No:98-01-95
Date of Approval:1/27/98
CCMB:1998R Page:54

Petition to Vacate
Petition No:97-10-103.04R
Description:A 5ft wide utility easement; See CCMB
Date of Approval:01/27/98
Resolution No:98-01-95
CCMB:1998R Page:54
Recorded on:02/12/98 OR Book:2929 Page:3429-3432

DEL VERA COUNTRY CLUB, UNIT 1

A SUBDIVISION IN SECTIONS 4 & 5, TOWNSHIP 43 SOUTH, RANGE 24 EAST
AND A REPLAT OF PART OF NORTH FORT MYERS PARK (PB 9, PG 113)
LEE COUNTY, FLORIDA

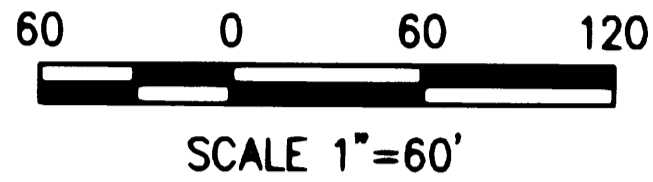
SHEET 10 OF 19
JOB NUMBER 8958
DATE JUNE, 1990



DEL VERA COUNTRY CLUB, UNIT 1

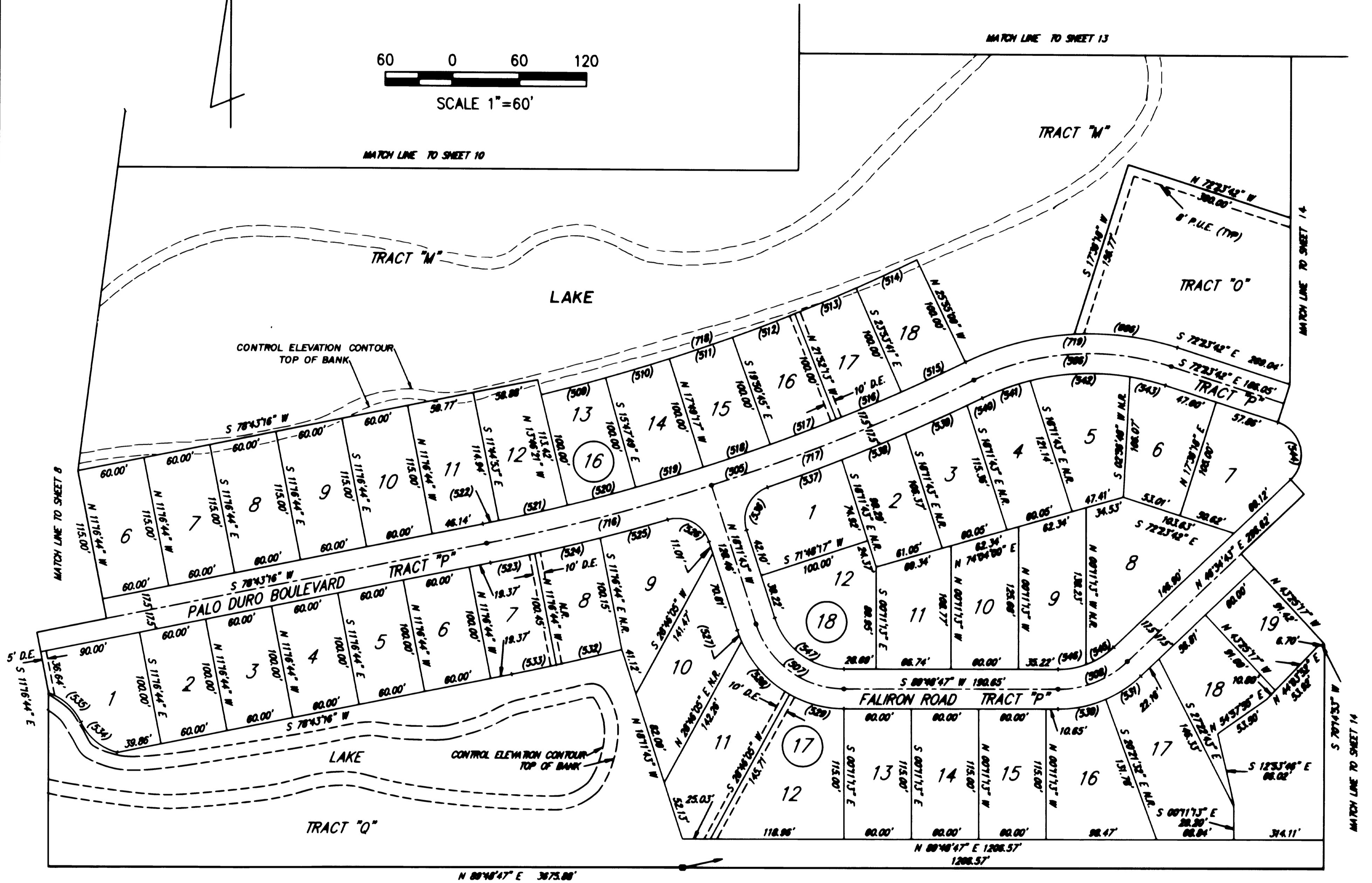
A SUBDIVISION IN SECTIONS 4 & 5, TOWNSHIP 43 SOUTH, RANGE 24 EAST
AND A REPLAT OF PART OF NORTH FORT MYERS PARK (PB 9, PG 113)
LEE COUNTY, FLORIDA

SHEET 11 OF 19
JOB NUMBER 8958
DATE JUNE, 1990



MATCH LINE TO SHEET 13

MATCH LINE TO SHEET 10



N 88°48'47" E 3675.88'

UNPLATTED

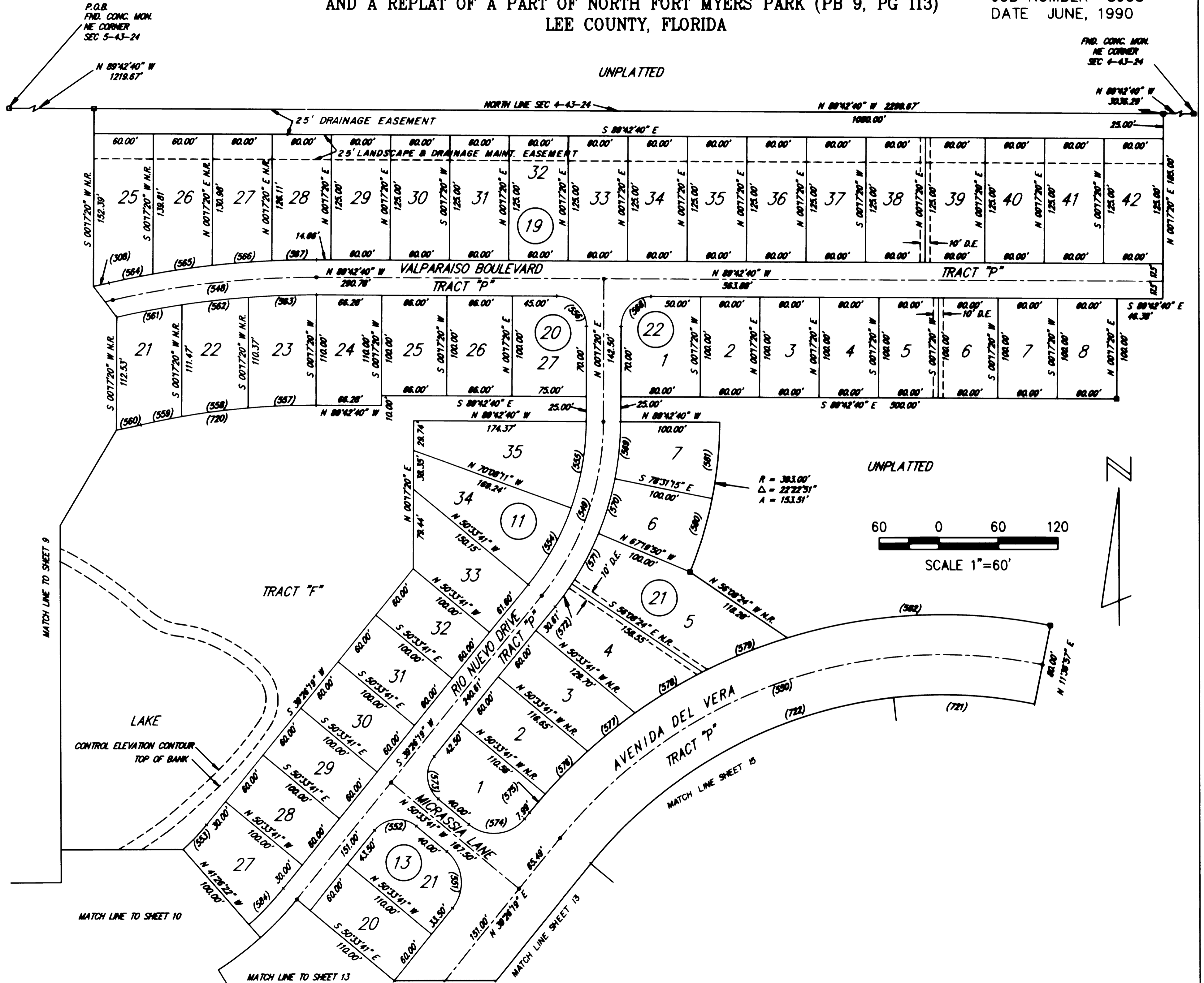
BROWN COLLINS, INC.
 2125 FIRST STREET, SUITE 201
 FORT MYERS, FLORIDA 33901

DEL VERA COUNTRY CLUB, UNIT 1

A SUBDIVISION IN SECTIONS 4 & 5, TOWNSHIP 43 SOUTH, RANGE 24 EAST
 AND A REPLAT OF A PART OF NORTH FORT MYERS PARK (PB 9, PG 113)
 LEE COUNTY, FLORIDA

PLAT BOOK 46 PAGE 18

SHEET 12 OF 19
 JOB NUMBER 8958
 DATE JUNE, 1990

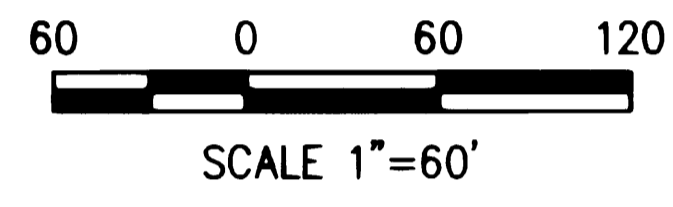
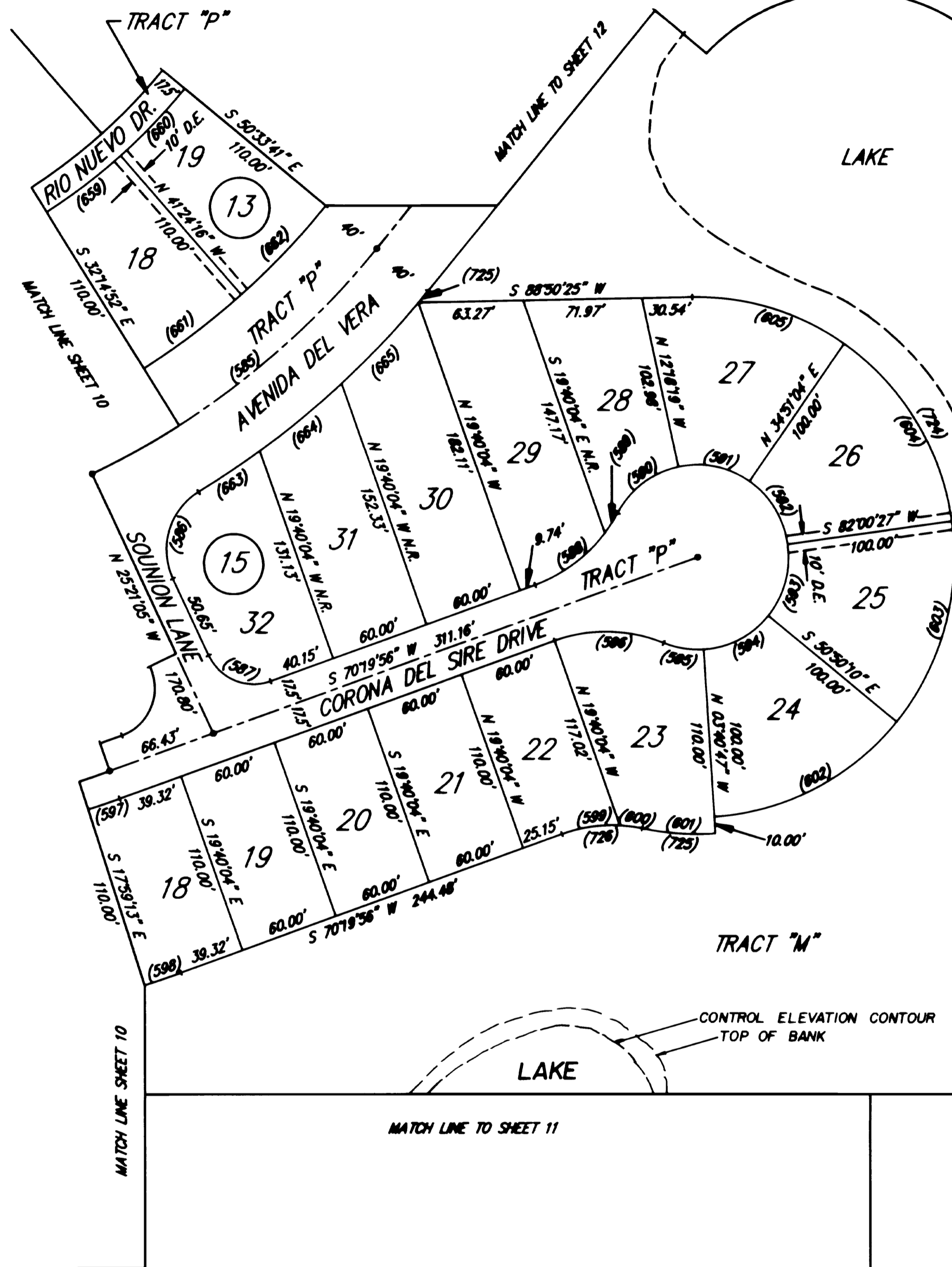


DEL VERA COUNTRY CLUB, UNIT 1

A SUBDIVISION IN SECTIONS 4 & 5, TOWNSHIP 43 SOUTH, RANGE 24 EAST
AND A REPLAT OF A PART OF NORTH FORT MYERS PARK (PB 9, PG 113)
LEE COUNTY, FLORIDA

SHEET 13 OF 19
JOB NUMBER 8958
DATE JUNE, 1990

MATCH LINE SHEET 15



MATCH LINE TO SHEET 15

LAKE

TRACT "M"

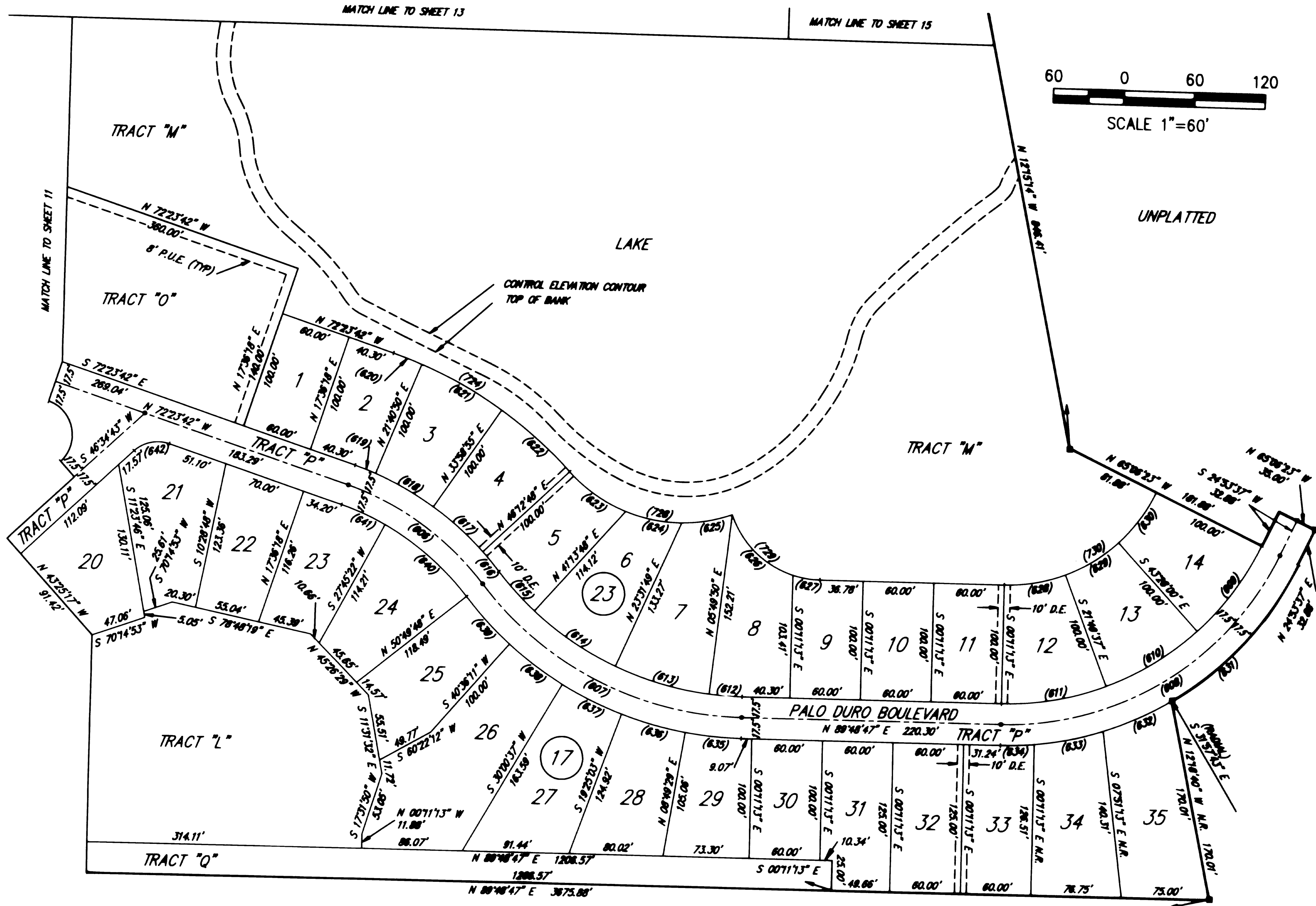
CONTROL ELEVATION CONTOUR
TOP OF BANK

MATCH LINE TO SHEET 11

MATCH LINE TO SHEET 14

DEL VERA COUNTRY CLUB, UNIT 1

A SUBDIVISION IN SECTIONS 4 & 5, TOWNSHIP 43 SOUTH, RANGE 24 EAST
AND A REPLAT OF A PART OF NORTH FORT MYERS PARK (PB 9, PG 113)
LEE COUNTY, FLORIDA

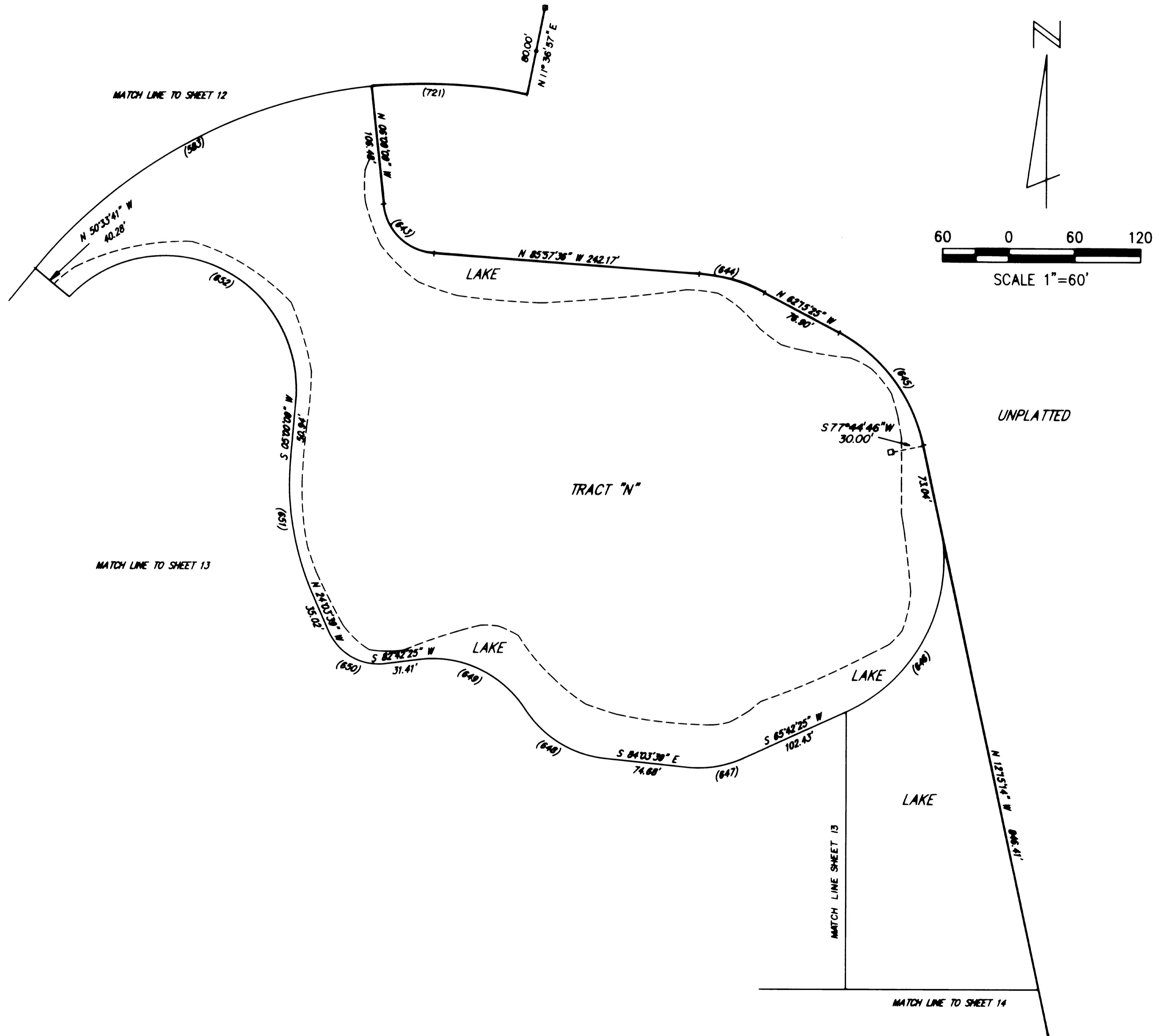


UNPLATTED

Petition to Vacate
Petition No:97-08-135.04R
Description: A 5ft wide utility easement
See CCMB
Date of Approval:10/28/97
Resolution No:97-10-28
CCMB:1997R, Page:598
Recorded on:11/14/97 OR Book:2888 Page:1516-1519

DEL VERA COUNTRY CLUB, UNIT 1

A SUBDIVISION IN SECTIONS 4 & 5, TOWNSHIP 43 SOUTH, RANGE 24 EAST
AND A REPLAT OF A PART OF NORTH FORT MYERS PARK (PB 9, PG 113)
LEE COUNTY, FLORIDA



DEL VERA COUNTRY CLUB, UNIT 1

A SUBDIVISION IN SECTIONS 4 & 5, TOWNSHIP 43 SOUTH, RANGE 24 EAST
AND A REPLAT OF A PART OF NORTH FORT MYERS PARK (PB 9, PG 113)
LEE COUNTY, FLORIDA

SHEET 19 OF 19
JOB NUMBER 8958
DATE JUNE, 1990

SHEET 14 CURVE TABLE

NUMBER	RADIUS	DELTA	ARC	CHORD BEARING	CHORD
606	247.50'	33°13'31"	143.52'	S55°48'57"E	141.52'
607	287.50'	51°01'02"	255.99'	S64°40'43"E	247.62'
608	257.50'	64°55'10"	291.76'	N57°21'12"E	276.40'
609	240.00'	21°38'23"	90.64'	N35°42'48"E	90.11'
610	240.00'	21°38'23"	90.64'	S57°21'12"W	90.11'
611	240.00'	21°38'24"	90.64'	S78°59'35"W	90.11'
612	270.00'	06°01'03"	28.36'	N87°10'42"W	28.34'
613	270.00'	17°41'58"	83.41'	N75°19'10"W	83.08'
614	270.00'	17°41'58"	83.41'	N57°37'11"W	83.08'
615	270.00'	09°36'00"	45.24'	N43°58'12"W	45.19'
616	285.00'	04°37'00"	21.35'	N41°28'42"W	21.35'
617	285.00'	12°13'53"	56.57'	N49°54'08"W	56.46'
618	285.00'	12°18'05"	56.89'	N62°10'07"W	56.79'
619	265.00'	04°04'33"	18.85'	N70°21'26"W	18.85'
620	365.00'	04°04'33"	25.96'	S70°21'26"E	25.96'
621	365.00'	12°18'05"	78.36'	S62°10'07"E	78.21'
622	365.00'	12°13'53"	77.92'	S49°54'08"E	77.77'
623	130.00'	25°48'39"	58.56'	S56°41'31"E	58.07'
624	130.00'	21°38'06"	49.13'	S80°25'24"E	48.83'
625	130.00'	19°13'00"	43.60'	N79°08'33"E	43.40'
626	80.89'	53°02'12"	74.88'	S46°59'03"E	72.23'
627	80.89'	16°41'04"	23.55'	S81°50'41"E	23.47'
628	140.00'	21°38'24"	52.88'	N78°59'35"E	52.56'
629	140.00'	21°38'23"	52.88'	N57°21'12"E	52.56'
630	140.00'	21°38'23"	52.88'	N35°42'48"E	52.56'
631	275.00'	33°08'41"	159.08'	N41°27'57"E	156.87'
632	275.00'	13°22'34"	64.20'	S64°43'34"W	64.05'
633	275.00'	12°23'42"	59.49'	N77°36'42"E	59.38'
634	275.00'	06°00'13"	28.82'	S86°48'40"W	28.80'
635	305.00'	09°00'43"	47.97'	N85°40'52"W	47.92'
636	305.00'	10°35'34"	56.39'	N75°52'44"W	56.31'
637	305.00'	10°35'34"	56.39'	N65°17'10"W	56.31'
638	305.00'	10°35'34"	56.39'	N54°41'36"W	56.31'
639	305.00'	10°13'37"	54.44'	N44°17'00"W	54.37'
640	230.00'	23°04'26"	92.62'	N50°42'25"W	92.00'
641	230.00'	10°08'04"	40.75'	N67°19'10"W	40.70'
642	30.00'	61°01'34"	31.95'	S77°05'30"W	30.46'
727	365.00'	28°36'31"	182.25'	S58°05'27"E	180.36'
728	130.00'	66°40'46"	151.29'	S77°07'34"E	142.90'
729	80.89'	69°43'16"	98.43'	S55°19'35"E	92.47'
730	140.00'	64°55'10"	158.63'	N57°21'12"E	150.28'

SHEET 7 LINE TABLE

LINE	BEARING	DISTANCE
1	S 12°29'46" E	54.16'
2	N 03°03'33" E	45.72'
3	S 47°29'33" E	47.86'
4	N 28°11'27" W	35.10'
5	S 33°34'03" W	11.81'
6	S 19°28'56" W	13.21'
7	N 45°54'31" E	69.69'
8	N 65°56'37" E	121.19'
9	S 44°29'33" W	42.46'
10	N 69°38'17" E	54.98'
11	N 53°34'02" W	12.85'
12	N 41°39'08" E	53.07'
13	N 02°02'19" W	16.21'
14	S 89°10'54" W	21.97'
15	S 70°32'11" W	35.89'
16	N 22°17'46" E	21.86'

SHEET 15 CURVE TABLE

NUMBER	RADIUS	DELTA	ARC	CHORD BEARING	CHORD
643	50.00'	79°48'27"	69.85'	S46°03'20"E	64.15'
644	150.00'	23°42'10"	62.05'	S74°06'30"E	61.61'
645	150.00'	50°00'11"	130.91'	S37°15'20"E	126.79'
646	150.00'	77°57'40"	204.10'	S26°43'36"W	188.72'
647	100.00'	30°13'56"	52.76'	S80°49'23"W	52.15'
648	100.00'	50°34'40"	88.27'	N58°46'19"W	85.44'
649	100.00'	63°48'36"	111.37'	N65°23'17"W	105.70'
650	50.00'	73°13'56"	63.91'	N80°40'37"W	59.65'
651	250.00'	29°03'48"	126.81'	N09°31'45"W	125.46'
652	120.00'	141°33'45"	296.49'	N65°46'43"W	226.62'

SHEET 16 CURVE TABLE

NUMBER	RADIUS	DELTA	ARC	CHORD BEARING	CHORD
666	255.00'	20°53'51"	93.01'	N82°50'36"W	92.49'